

# SFP-DR-BX-series

## 125 Mbps / 1250 Mbps Dual-Rate Single-Fiber SFP

### DESCRIPTION

The SFP-DR-BX transceivers are fully compliant with the latest industrial SFP Multi-Source Agreement (MSA), Gigabit Ethernet 1000Base-BX and Fast Ethernet 100Base-BX. They support data rates 125 Mb/s up and 1.25Gb/s and can be used in Ethernet and FTTx applications. The transceivers operate bi-directionally on single fiber at wavelengths of 1310nm/1490nm or 1310nm/1550nm.

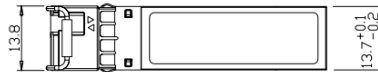
The modules are hot pluggable and come in variants for 20 km and 40 km transmission on SM fiber.

### APPLICATIONS

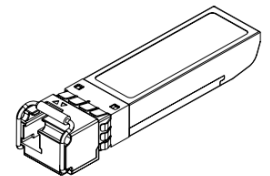
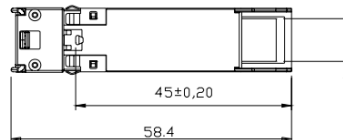
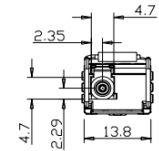
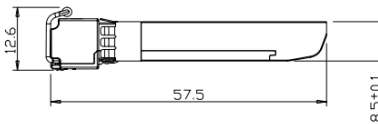
- Single fiber operations
- Fast Ethernet
- Gigabit Ethernet
- FTTx

### FEATURES

- Up to 20 km or 40 km transmission on SM fiber
- 1310nm/1490nm or 1310nm/1550nm operation
- Compliant to SFP MSA and SFF-8472
- Digital Diagnostics Monitoring
- Hot-Pluggable SFP footprint
- Optical LC interface for bi-directional operation
- Operating temperature 0°C to 70°C
- RoHS compliance



Units in mm



### LASER SAFETY

This singlemode transceiver is a Class 1 laser product. It complies with IEC-60825 and FDA 21 CFR 1040.10 and 1040.11. The transceiver must be operated within the specified temperature and voltage limits. The optical ports of the module need to be terminated with an optical connector or a dust plug.

### OPTICAL PARAMETERS

Part no.	Wavelength [nm]	Opt. Output Power [dBm]	Opt. Receiver Sensitivity [dBm]	Power Budget [dB]
SFP-DR-BX20D-35	1310Tx/1550Rx	-8 to -2	-23 to -3	15
SFP-DR-BX20D-53	1550Tx/1310Rx	-8 to -2	-23 to -3	15
SFP-DR-BX20D-34	1310Tx/1490Rx	-8 to -2	-23 to -3	15
SFP-DR-BX20D-43	1490Tx/1310Rx	-8 to -2	-23 to -3	20
SFP-DR-BX40D-35	1310Tx/1550Rx	-3 to +2	-23 to -1	20
SFP-DR-BX40D-53	1550Tx/1310Rx	-3 to +2	-23 to -1	20
SFP-DR-BX40D-34	1310Tx/1490Rx	-3 to +2	-23 to -1	20
SFP-DR-BX40D-43	1490Tx/1310Rx	-3 to +2	-23 to -1	20

### ORDERING INFORMATION

Part no.	Description
SFP-DR-BX20D-35	SFP BiDi, Dual Rate 100 / 1000 Mbps, DDM, 20km, Tx/Rx=1310/1550nm, 15dB, SM
SFP-DR-BX20D-53	SFP BiDi, Dual Rate 100 / 1000 Mbps, DDM, 20km, Tx/Rx=1550/1310nm, 15dB, SM
SFP-DR-BX20D-34	SFP BiDi, Dual Rate 100 / 1000 Mbps, DDM, 20km, Tx/Rx=1310/1490nm, 15dB, SM
SFP-DR-BX20D-43	SFP BiDi, Dual Rate 100 / 1000 Mbps, DDM, 20km, Tx/Rx=1490/1490nm, 15dB, SM
SFP-DR-BX40D-35	SFP BiDi, Dual Rate 100 / 1000 Mbps, DDM, 40km, Tx/Rx=1310/1550nm, 20dB, SM
SFP-DR-BX40D-53	SFP BiDi, Dual Rate 100 / 1000 Mbps, DDM, 40km, Tx/Rx=1550/1310nm, 20dB, SM
SFP-DR-BX40D-34	SFP BiDi, Dual Rate 100 / 1000 Mbps, DDM, 40km, Tx/Rx=1310/1490nm, 20dB, SM
SFP-DR-BX40D-43	SFP BiDi, Dual Rate 100 / 1000 Mbps, DDM, 40km, Tx/Rx=1490/1490nm, 20dB, SM